

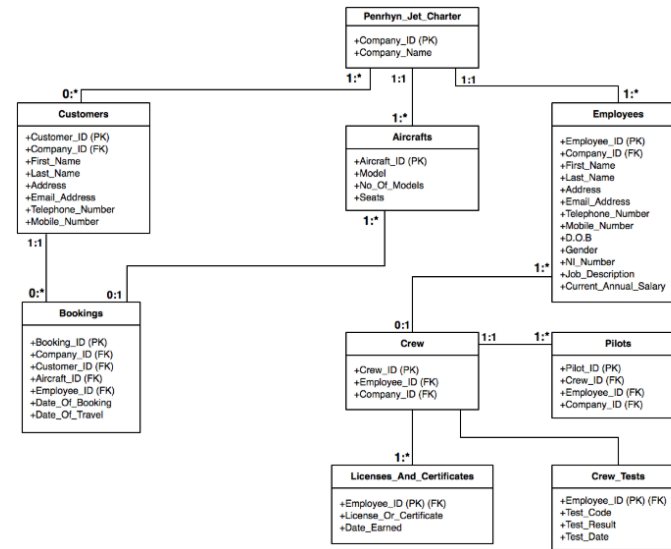
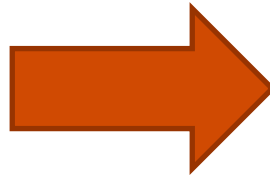
Digitalizace a inovace

Ondřej Váňa
2019





Automatizované zpracování dat



Automatické zpracování dat

Klik Portal

- Automatické zpracování klientských dat
- Čištění a automatický upload do databáze
 - různé vstupy (.csv, .txt, .xlsx)
 - do aplikace lze vložit např. .zip s 100 excely (nemusím to uploadovat po staru po jednom)
- Transformace dat
- Spuštění dodatečných aplikací a výpočtů
 - vygenerování testů
 - Klik AI
 - R2C



SAP Data

Drag and drop your **BSEG files** or click to manually upload them.
Supported formats: **zip**, csv, txt, del, Excel files.

Drag and drop your **BKPF files** or click to manually upload them.
Supported formats: **zip**, csv, txt, del, Excel files.

Upload All Cancel All **Remove All**

File Name	Size	Status	Actions
client_1_BSEG.txt	6.78 MB		

Items per page: 5 1 - 1 of 1 |< < > >|

Upload All Cancel All **Remove All**

File Name	Size	Status	Actions
client_1_BKPF.txt	2.54 MB		

Items per page: 5 1 - 1 of 1 |< < > >|



PROCESSING FILES... PLEASE WAIT

Confirm pre-selected column mapping.

Submit

Cancel

STATUS: ***RUNNING***

ACTION: ***Preparing data for upload: 34.51%***

Cancel

GL_Business_Unit_Code BUKRS	GL_Account_Full HKONT	GL_Account_Short HKONT	GL_Cost_Centre Not Used	GL_Profit_Centre Not Used	GL_Journal_ID BELNR	GL_Reporting_Amount DMBTR	GL_Amount_Cr_Dr_Indic SHKZG
Z033	0000551100	0000551100			0000053000	10400.00	S
Z033	0000551100	0000551100			0000053000	9302.00	S
Z033	0000551100	0000551100			0000053000	97560.00	S
Z033	0000551100	0000551100			0000053000	7445.00	S
Z033	0000551100	0000551100			0000053000	417.00	S
Z033	0000551100	0000551100			0000053000	934.00	S
Z033	0000551100	0000551100			0000053000	375342.00	S
Z033	0000551100	0000551100			0000053000	4543.00	S
Z033	0000551100	0000551100			0000053000	16200.00	S
Z033	0000551100	0000551100			0000053000	23459.00	S

“

Klik AI



Klik AI

Analýza transakčních dat

Statistické vyhodnocování neobvyklých transakcí

- Poskytuje informaci proč daná transakce je označena jako neobvyklá
- Transakce se nevyhodnocují napříč celým datasetem, ale pouze vzhledem k vybraným parametrům (uživatel, účet, částka)

Klik AI

Select Pattern

Overall risk

User - Amount

User - Account

User - Source

User - Time

User - Day

Account - Amount

Account - Month

Pattern Description

This pattern focus on relationship between account and posted amounts to this account. It identifies most commonly posted amounts to this account and based on this assess posted amount commonness for selected transaction.

Select an area of concern from the visualisation

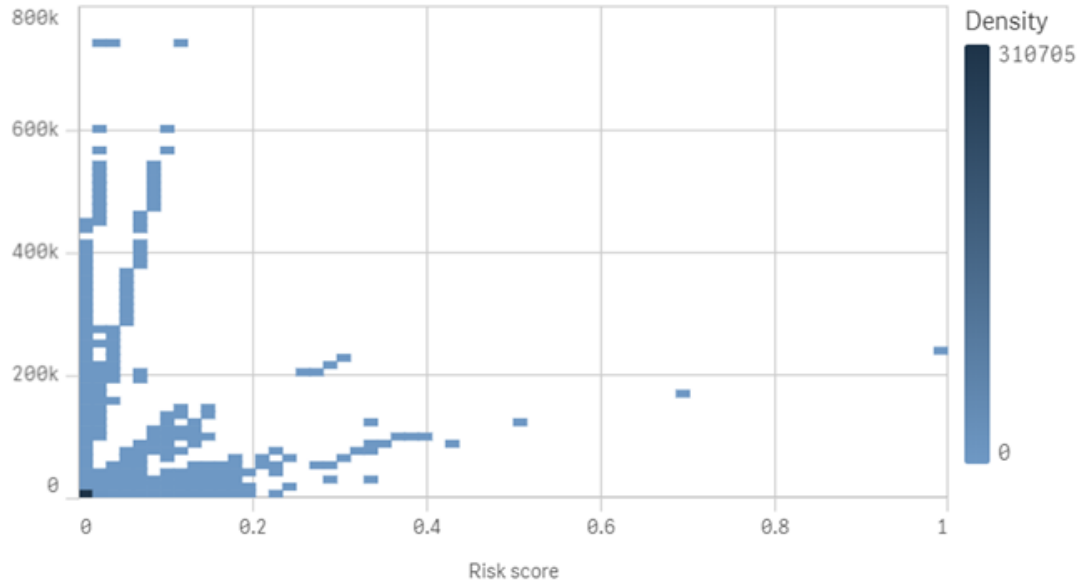
Select one particular transaction from the table

Transaction Detail

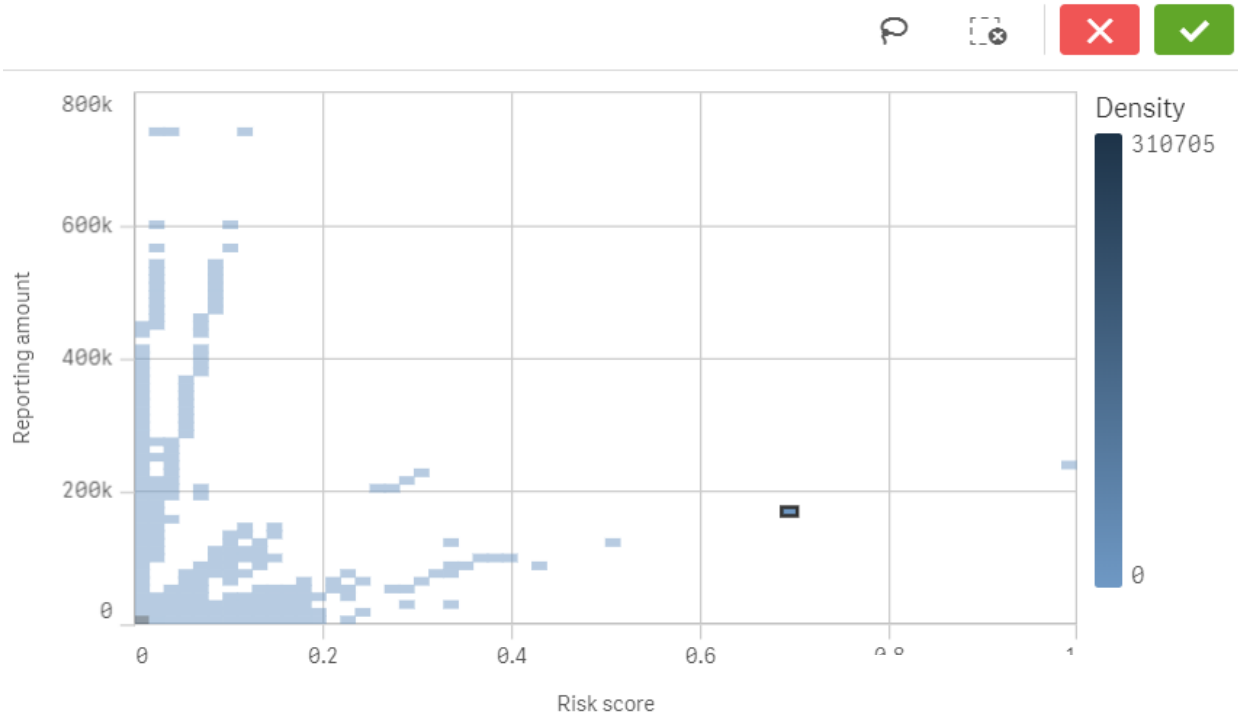
TransID	Q	TotalS...	Q	GL_Ac...	Q	GL_Journ...	Q	GL_Eff...	Q	GL_Us...	Q	GL_Re...	Q
130145		0		385001		D002-7000001		20160930		jaros		3.45	
130146		0		501201		D002-7000001		20160930		jaros		3.45	
134098		0		385001		D002-7000002		20160930		jaros		3.45	
134099		0		501201		D002-7000002		20160930		jaros		3.45	
109468		0		385001		D002-7000003		20160930		jaros		4.49	
109469		0		501201		D002-7000003		20160930		jaros		4.49	

See the detail description of the selected transaction

Select one transaction, to see detailed description.



Klik AI



* Providing overview of 320.7k dimension values.

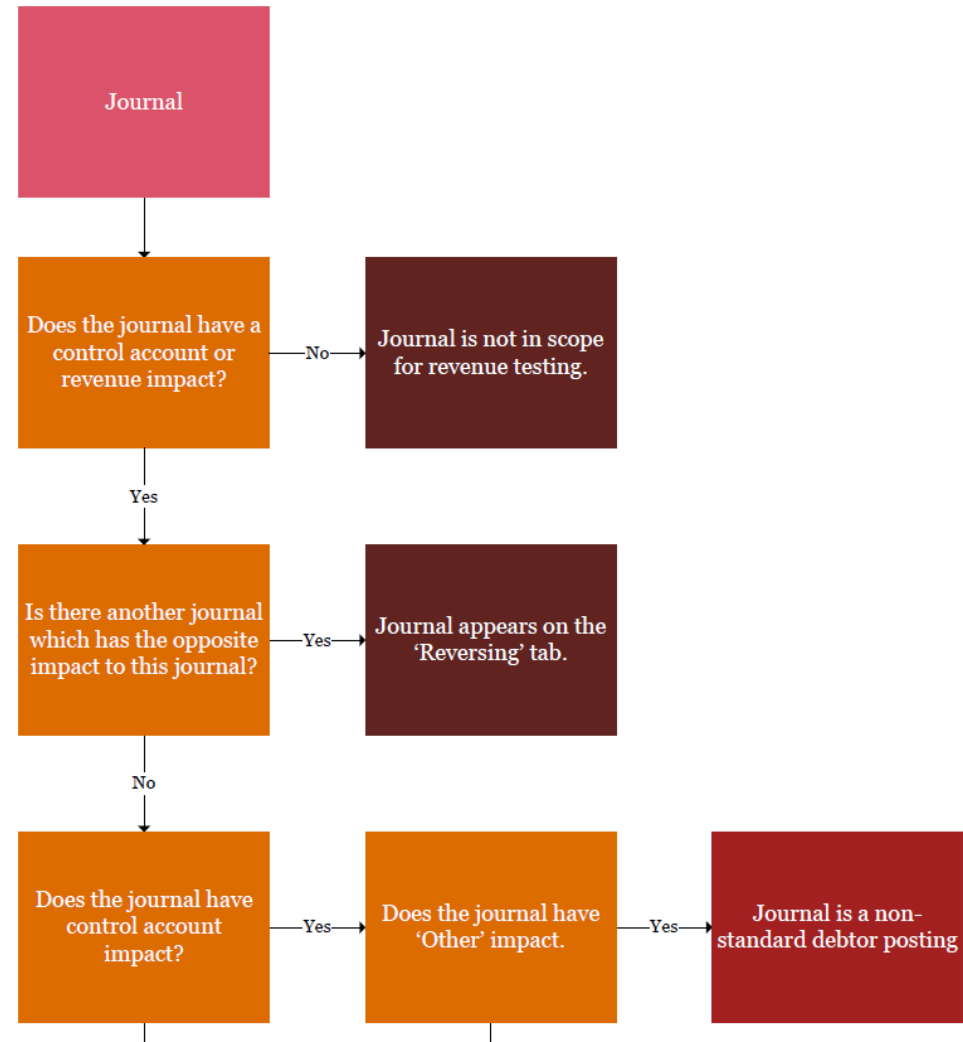
[See the explanation below](#)

The amounts median posted to this account is 63. The selected transaction D050-7000009 has reporting amount 167275.52, which is 264593% of the selected account median.



Revenue 2 Cash

Rozhodovací strom



pwc Revenue Split



Filters

Account Scope

Unusual Combinations

Random Selection

Pivot Table

Revenue Total

Debit: 49 916 377,42
 Credit: 179 595 470,46
 Total: -129 679 093,04



Expected Revenue

Debit: 3 509 211,02
 Credit: 171 241 582,40
 Total: -167 732 371,38



Unexpected Revenue

Debit: 46 407 166,40
 Credit: 8 353 888,06
 Total: 38 053 278,34

HELP

This diagram shows the breakdown of all Revenue transactions.

Revenue Total - Summary of all Revenue transactions, this amount includes Sales Tax or Cash.

Expected Revenue - Transactions that follow an expected pattern such as Sales Tax or Cash.

Cash - Transactions supported by cash in 100%.

Revenue- Accounts Receivable (Direct) - Transactions supported by Accounts Receivable.

Revenue- Accounts Receivable (Partial) - Transactions supported by Accounts Receivable and Cash, but also hitting some other accounts.

Cash

Debit: 1 676 337,18
 Credit: 59 328 010,98
 Total: -57 651 673,80

Accounts Receivable (Direct)

Debit: 1 832 873,84
 Credit: 111 913 571,42
 Total: -110 080 697,58

Accounts Receivable (Partial)

Debit: 0,00
 Credit: 0,00
 Total: 0,00

% **Other accounts / Revenue** (the lower the percentage, the better)
 within Accounts Receivable (Partial) bucket

-

“

Q&A